

KITEBOARDING

WORLD KITE & WINDSURFING GUIDE

In search of your next kite or wind vacation spot? Well grab a copy, slide into the easy chair and explore the best destinations in the world!

The World Guide is a comprehensive guide to the kite and windsurfing regions of the world! It covers 100 regions on nine continents, with over 1200 of the best spots around the globe. Breath taking photos with detailed maps and in-depth analysis of wind, wave and weather. Loaded with real world travel information, contact details for shops/schools, accommodations restaurants and other insider knowledge.

The guide is a huge collaboration of first hand experience from seasoned locals, top pro riders and other sports legends. Pros include Antoine Albeau, Kristin Boese, Pete Cabrinha, Bjørn Dunkerbeck, Aaron Hadlow, Robby Naish, Ruben Lenten, Ben Wilson and many more. Paperback: 320 pages Publisher: Stoked Publications, English Edition 19. July 2010.

Item Code: TWG MSR \$59.95



ROTATABLE FOOTSTRAP PLATE *The First and Only Rotating Footstrap Plate!*

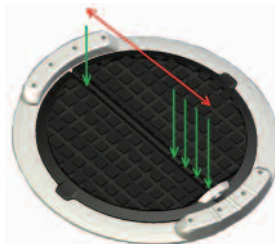
Another revolutionary product from NSI. The Rotatable Footstrap Plate delivers improved board and jibe control and reduced knee pain or fatigue. Designed by Henning Kuntzel in Denmark, the footstrap plate pivots and locks easily in place for optimum foot placement and knee alignment. Simply apply weight to foot to lock in, lift foot slightly and rotate to pivot the plate to preferred position, then lock in again. Originally designed for kiteboarding waves, but can be used on twin tips, wakeboards or windsurf boards.

Three models available – plate only, twin tip style with one heel pad or directional/surf style with two heel pads. Purchase plate only if your board has a pad that you can cut into and mount. Two plates will be needed for the optimal TwinTip setup. Plate sold individually, footstraps not included.

WILL IT FIT YOUR BOARD? Boards with plugs for straps can easily be updated with the new rotatable plate. Your plugs should allow a distance between 87 mm up to 137 mm. Refer to the above CAD drawing which shows the possible screw positions. The plate should fit most boards with standard plug positions for straps. The plate thickness below the screw head is 5 mm, so your footstrap screws should fit.

Item Code: RFP MSR \$86.95

1 slot, 4 holes - up to 137mm distance fitting most plugs



RIDE WITH A RELAXED FOOT, NO NEED TO TWIST YOUR ANKLE / CHOOSE THE BEST ANGLE POSITION FOR BUSTIN' YOUR MOVES
BETTER BOARD CONTROL / EASY FOOTSTRAP ENTRY / AWESOME JIBE CONTROL
REDUCES KNEE PAIN AND FATIGUE FOR ENDLESS SESSIONS

T-90 KITESURFING FOOTSTRAP *Fly up wind and jibe like never before!*

The revolutionary T-90 Strap is designed by Mike Solbach and Brian Hinde specifically for directional and surf kiteboards. The T shaped strap attaches in three locations allowing the rider to shift their foot 90 degrees for incredible up wind performance and unmatched security when jibing the board. Never miss a jibe as you can place your new front foot in the strap, parallel with the length of the board before removing your other foot. Two feet in the front strap at the same times equals jibe control and success. Once tried, believed!

Includes 2 NSI Surface Mount Footstrap Insert Plates for mounting.

Item Code: T90 MSR \$59.95



BONE STRAP/PAD WITH INSERTS *Turn any surf or skimboard into a kite or wakeboard!*

Turn your surfboard or skimboard into a kiteboard or wakeboard with NSI's Bone Strap or Deck Pad w/ Inserts. Grab one for the front and another for the back and you're ready for a tow-in or a full day kiteboarding/wakeboarding. For a regular day on the waves, simply remove the straps and get out there. The Bone Strap is a bone shaped pad with NSI's Surface Mount Inserts built into both ends at standard 6 1/2" spacing. Center can be trimmed to custom fit your arch. Placement of the pad is very important, as only one position for the strap is available once mounted. Deck Pad

w/ Inserts is similar, but offers full foot area pad coverage, providing plenty of fore and aft heel movement and dual density traction under entire foot. Straps and hardware not included.

Item Code: BST Bone Strap MSR \$49.95

Item Code: DPI Deck Pad w/ Inserts MSR \$69.95



FULL THROTTLE DOUBLE ACTION KITE PUMP

Double action hand pump, delivers air on both the up and down stroke to make inflation twice as fast. Universal adaptors to fit various valves. Includes hose wrap to keep hose and adaptors conveniently attached. Inflates up to 14 PSI.

Item Code: PUMP
MSR 39.95



LINES

"A film about some surfers living in the golden age of kiting."

No truer words have been written about the description of this new film by legendary surf photographer John

Bilderback and his wife Alexis. This is by far the most progressive and entertaining surf kiting footage ever.

Item Code: LINES MSR \$34.95

BIG WINDY

Big Windy is the awesome new movie from John Bilderback featuring



Moehau Goold, Davey Blair, Reo Stevens, John Amundson, Josh Mulcoy Ben Wilson, Pete Cabrinha, and many more. Filmed throughout Micronesia, Polynesia and Indonesia, the potential and power of the wind has been harnessed around this showcase of sick kiting action that you won't want to end.

Item Code: BWINDY MSR \$34.95



IKAIKA STAND UP PADDLE SURF DVD

Ikaika Kalama is at the forefront of this newest hybrid/surf paddle sport. He is a world-renowned waterman and respected throughout the world for

being a 3 time tow-in champion. Most recently, he has taken StandUp Paddling Boarding to a whole new level. This DVD captures some of the best surf riding to date.

Item Code: SUPIKA MSR \$22.95



DRYCASE

Waterproof protection for phone/camera/ mp3 players!

The DryCASE is a flexible, crystal clear waterproof bag that allows complete use of your phone or camera while keeping it dry and clean. Simply pump out all the air with the easy to use hand pump and the bag will vacuum seal around the contents and become completely waterproof. The airtight seal ensures that the contents of the bag will stay dry even when submerged underwater and is crystal clear so pictures can be taken through it while using the other side. DryCase comes with the activity armband which is a great way to attach the DryCase to your arm, boat, jet ski, kayak or anything else.

Item Code: Dry MSR \$39.95



DRYBUDS *Rock out on the water!*

The DryBuds are the perfect match for the DryCase or any water case with a standard headphone jack. Whether you're rockin' on the water while kiteboarding, windsurfing, kayaking, stand up paddling or any watersport, DryBuds are completely submersible and waterproof up to 10 feet. Just seal your tunes in the DryCase, plug in the DryBuds and enjoy!

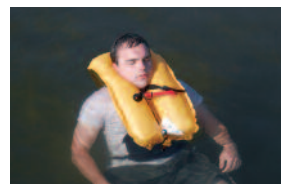
Item Code: DB MSR \$29.95



INFLATABLE PFD BELT

Inflatable life jacket inflates manually by pulling the inflation handle or by oral inflation. Provides total freedom of movement, comfort, safety and peace of mind for all watersports. Zippered pocket for convenient storage of keys, cell phone, license, etc. * U.S. Coast Guard Approved Type V Life Jacket / Personal Flotation Device PFD with Type III Performance • Universal size fits adults over 80 lbs. • Not approved for children under 16 years of age • Replaceable CO2 cartridge

Item Code: IBP MSR \$101.95



Rearming Kit for Inflatable PFD Belt

If you purchase the Inflatable PFD it is a good idea to have a Rearming Kit on hand! CO2 Cartridge must be changed out after you use the PFD once. Kit includes 24 gram CO2 cylinder with appropriate 1/2" thread, one Halkey-Roberts green indicator tab and instructions for rearming the belt pack.

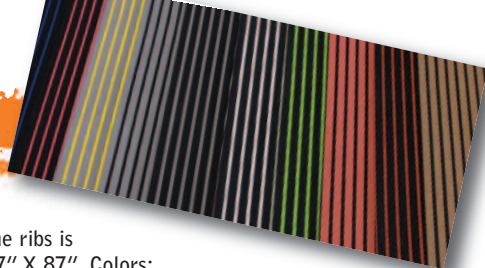
Item Code: IBPC MSR \$25.95



standup paddleboard

NSI SUP PADZ – New Material Color Options

New for 2011 is TWO TONE ribbed cut traction material. The tops of the ribs are one color, and in between the ribs is another color. All SUP pads are available in this new material as well as full or partial sheets. Sheet size is 47" X 87" Colors: (Top Color/Bottom Color) Black/White, Black/Gray, Gray/Black, Brown/Black, Black/Royal Blue, Black/Lime Green, Black/Pink, Black/Salmon, Gray/Yellow



SUP NEOPRENE WATER BOTTLE HOLDER

This flexible neoprene water bottle holder is the perfect solution for on board hydration. Designed to fit most water bottles, expanding for larger ones, and collapsing when not in use for easy board transport. Built in bungie cord with cordlock holds the bottle securely. Includes a stiff plastic plate base built in, with mounting hole and one round surface mount insert plate and screw to attach to any board.

Item Code: SUPNBH MSR \$24.95

SUP BOARD NOSE CONE

This exciting patent pending product will be a welcome accessory for any truck owner. The "partial" board bag covers the first 23 inches of the board nose to protect it while loading and transporting in the back of a pickup truck. Universal shape fits most SUP boards and is held on with friction. Simply slide it on and load your board. Can be used as a pickup tailgate seat pad when at the beach!

Item Code: SUPNC MSR \$48.95



MOSAIC SUP PAD

Create your own deck pad masterpiece!

The Mosaic Pad is a big bag of traction pad pieces, cut into Circles, Donuts, Squares, Rectangles and Triangles. Now anyone can create their own cool look for their stick, and get the enhanced traction mosaic pieces offer. NSI's bag

of bits covers the same board area as our popular Universal One Piece pad - 24" wide by 87" long. This kit is also great for 3 to 4 boards if you want to add nose ride padding or additional tail pad grip.

Item Code: SUPM MSR \$99.95



SUP Fishing Rod Holder

The Stand Up Paddle Board Fishing Rod Holder is a handy accessory that mounts at the front or rear of your board using an oversized NSI Surface Mount Insert Plate. This allows removal of the rod holder when not in use. The rod holder is 2" diameter pipe, cut to hold any pole securely and designed at an angle to accommodate trolling. Use with other NSI On Deck Accessories for a complete "fish gettin" craft. 21" tall.

Item Code: SUPRH MSR \$49.95



BOARDFISHER SAFARI PAK

The SUP Safari Pak is made for exploring, camping, fishing and everyday outings. The Pak has a patent pending paddle holder, custom fishing rod holders, ample exterior pockets, a large unobstructed interior and is made with the highest quality quick drying nylon plastic reinforced mesh material available. Safari attaches with our simple low profile peel and stick deck anchor system that will not interfere with paddling or surfing. Simply slide the straps out and Safari is removed from the deck of your SUP always ready to be taken on your next adventure. Includes SafariPak, Internal Crate, Tie-down Kit, pole holder insert. Everything needed to go fishing or just cruise on any SUP or longboard surfboard.

Item Code: BDF MSR \$110.00



pro-tec helmets

The standard in comfortable, dependable and stylish head protection

All Pro-tec helmets available in sizes Small, Medium, Large, X-Large

PRO-TEC WATER HELMETS

PRO-TEC ACE TWO FACE

Rock it the way you want! The Two Face is designed to be worn with the visor either in the front or the back, utilizing the "Swing Lock" fit system, giving you a custom fit with style. Removable cupping ear guards and flat black paint under the brim of the helmet to minimize any reflection coming off the water.

Colors: Red, Gloss Carbon, Matte Black, White, Matte Camo

SHELL - High density injection molded ABS

LINER - Dual Density Waterproof EVA

VENTS - 7 open vents for ventilation and drainage

INTERIOR - Full surround interior

FIT SYSTEM - "Swing Lock" reversible adjustable rear fit system

EAR PADS - Removable cupping ear guards with water channels

FIT - 4 sizes / 2 shell breaks

CERTIFICATION - CE EN 1385 Water Sport Safety Standard

Item Code: 2Face MSR \$69.95

| | |
|---------|----------------------------|
| Small | 20.9-21.3 inches / 53-54cm |
| Medium | 21.7-22.0 inches / 55-56cm |
| Large | 22.4-22.8 inches / 57-58cm |
| X-Large | 23.2-23.6 inches / 59-60cm |



PRO-TEC WATER HELMETS

PRO-TEC ACE WATER

The Pro-tec Ace Water is known for its mass appeal for any watersport. Whether you're wakeboarding, kayaking or kiteboarding, the Ace Water offers cutting edge style, performance and fit. Equipped with 16 open vent holes for ventilation and water drainage. High density injection molded shell with an Interior fit system which offers various head shapes and sizes. Colors: Black, White, Yellow, Red, Blue



SHELL - High density injection molded ABS
 LINER - Dual Density Waterproof EVA
 VENTS - 16 open vents for ventilation and drainage
 INTERIOR - Full surround interior
 FIT - 4 sizes / 2 shell breaks
 CERTIFICATION - CE EN 1385 Water Sport Safety Standard
Item Code: AW MSR \$46.95

PRO-TEC ACE WAKE

The Ace Wake is loaded with features combining style, comfort, and adjustability. Best known for its 16 open vent holes for optimum ventilation and drainage, removable cupping ear guards, and Headlock fit system. High density ABS injection molded shell for durability and ultra light protection.

Colors: Black, Matte Contrast, Red, Blue, Yellow

SHELL - High density injection molded ABS

LINER - Dual Density Waterproof EVA

VENTS - 16 open vents for ventilation and drainage

INTERIOR - Full surround interior

FIT SYSTEM - "Head Lock" adjustable rear fit system

EAR PADS - Removable cupping ear guards with water channels

FIT - 4 sizes / 2 shell breaks

CERTIFICATION - CE EN 1385 Water Sport Safety Standard

Item Code: AWK MSR \$63.95



PRO-TEC OLD SCHOOL WAKE *The Original 70's style helmet*

The Old School Wake has trimmed the ear covers off to create a helmet with it's own style and flair. Soft dual density foam liner that everyone loves for the comfort and lightweight feel and an economical price.

Colors: Black, Red, Blue

SHELL - High-density, injection-molded PE

LINER - Dual-density, waterproof EVA

VENTS - 11 Open vents for ventilation and drainage

FIT - 4 Sizes/2 Shell Breaks

CERTIFICATION - CE EN 1385 Water Sport Safety Standard

Item Code: OSW MSR \$41.95

PRO-TEC SNOW HELMETS



PRO-TEC CLASSIC SNOW

The original Pro-tec classic helmet officially certified for snow, skate and bike use. Ride in style with the protection you need, on snow or off. Everyone loves an original.

Colors: Black & White

SHELL - High density injection molded ABS

LINER - EPS Impact Liner

VENTILATION - 12 screened vents

INTERIOR - removable & washable interior fit pads

FIT- 4 sizes / 3 shell breaks

EAR PADS - detachable ear pads with attached drop liner

CERTIFICATION

ASTM 2040/CE EN 1077/CPSC 1203

Item Code: CSNOW MSR \$56.95



PRO-TEC FREECARVE SNOW

Showcasing original Pro-tec styling, the Ace Freecarve is one of the most popular silhouettes on the mountain. With a new and improved low-profile fit, the Ace Freecarve is made for anyone looking for the perfect blend of comfort, style and protective performance.

Colors: Black & White

SHELL - High density injection molded ABS

LINER - EPS Impact Liner

VENTILATION - front slide goggle vent system with rear exhaust vents

GOGGLE SHELF- to keep goggles in places

INTERIOR - upgraded one-piece removable & washable full coverage interior

FIT- 4 sizes / 2 shell breaks

EAR PADS - Removable cupping ear guards with water channels

CERTIFICATION - ASTM 2040/CE EN 1077

Item Code: FREE MSR \$64.95



PRO-TEC RIOT SNOW

Introducing our newest addition to the Pro-tec Snow line, the new Riot helmet is the best in its class.

Built around the Classic shape with visor styling, the Riot features a lightweight, low profile fit and feel, meeting the high demands of Norwegian slope style destroyer Andreas Wiig.

Colors: Black & White

SHELL - High density injection molded ABS

LINER - EPS Impact Liner

VENTILATION - front slide goggle vent system with rear exhaust vents

GOGGLE SHELF- to keep goggles in places

INTERIOR - upgraded one-piece removable & washable full coverage interior

FIT- 4 sizes / 2 shell breaks

EAR PADS - Removable cupping ear guards with water channels

CERTIFICATION - ASTM 2040/CE EN 1077

Item Code: RIOT MSR \$89.95